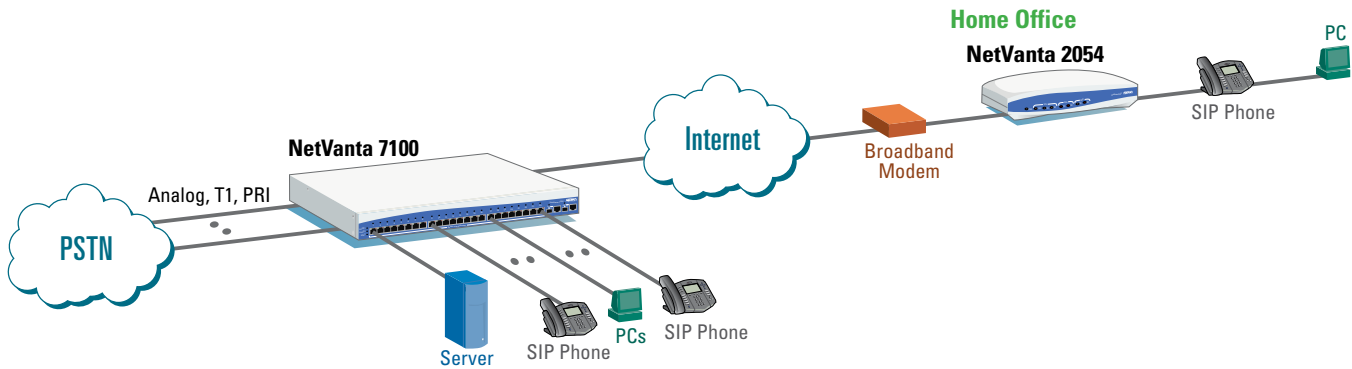


Teleworking and Home Office IP Telephony Solution



Many businesses find it extremely useful and productive for employees or owners to work from home, provided they can achieve the same level of functionality they are accustomed to at the business office. Using the NetVanta® 7100 in combination with the NetVanta 2054 at the remote home office, work-at-home users enjoy the same level of voice and data accessibility at an affordable price.

Using the NetVanta 2054 four-port integrated router/firewall/VPN/switch with a high-speed broadband (DSL or cable) Internet circuit, home office users can access the same voice features, company email and data servers, all from the comfort and convenience of home.

When working from home, the ADTRAN® IP telephone functions as if it is directly connected to the NetVanta 7100 IP PBX. Remote users can perform

4-digit dialing, speed dial, conference, retrieve voice mails—all with familiar phone operations.

Users also may install ADTRAN's IP Softphone on their laptop or home office desktop PC. The ADTRAN IP Softphone is a software application that runs on a MS Windows® computer and emulates the desk phone.

With built-in firewall, the system provides authentication and protects against unwanted Internet attacks. The integrated VPN provides encryption and security across the Internet.

Users can now cost-effectively increase their productivity with a fully-functional remote office that offers the same features, access, and benefits as in the business office.

Solution Features

- Ideal solution for home office or mobile connectivity
- Phone transparency over IP connectivity
- Enable remote users to have same features as the business office
- Supports IP desk phone or Softphone
- Secure Internet communications using integral firewall and VPN



ADTRAN, Inc.

Attn: Enterprise Networks
901 Explorer Boulevard
Huntsville, AL 35806

P.O. Box 140000
Huntsville, AL 35814-4000

256 963-8000 voice
256 963-8699 fax

General Information

800 9ADTRAN
info@adtran.com
www.adtran.com

Pre-Sales

Technical Support

800 615-1176 toll-free
application.engineer@adtran.com
www.adtran.com/support

Where to Buy

877 280-8416 toll-free
channel.sales@adtran.com
www.adtran.com/where2buy

Post-Sales

Technical Support

888 423-8726
support@adtran.com
www.adtran.com/support

ACES Installation & Maintenance Service

888 874-ACES
aces@adtran.com
www.adtran.com/support

International Inquiries

256 963 8000 voice
256 963-6300 fax
international@adtran.com
www.adtran.com/international

For the regional office nearest you, visit:

www.adtran.com/regional

ADTRAN and NetVanta are registered trademarks of ADTRAN, Inc. All registered trademarks and trademarks mentioned in this publication are the property of their respective owners.

ADTRAN believes the information in this publication to be accurate as of publication date, and is not responsible for error. Content subject to change without notice.



ADTRAN is an ISO 9001, ISO 14001, and a TL 9000 certified supplier.

EN762F_AOS_14.1 December 2006
Copyright © 2006 ADTRAN, Inc.
All rights reserved.

NetVanta® 7100

Converged IP Office in a Box

Product Specifications

IP PBX System Features

- Analog Trunks (Loop Start/Ground Start; FSK Capture of Caller ID name/number; two integral, 10 max.)
- Analog Stations (Loop Start DTMF; 1500 feet over 26 AWG; two integral, 10 maximum)
- Multilevel, eight-port auto-attendant
- Busy Lamp Field/Direct Station Select (BLF/DSS)
- Call Detail Records
- Caller ID Name/Number Override (internal and external)
- Classes of Service
- Codec support includes G.711, G.729, G.722 (wideband)
- Configurable Dial Plan
- Door Relay
- Door Phone
- Email notification of voice mail message
- Global Call Coverage Lists
- IP Stations (50 maximum; SIP hardphone or softphone)
- Least-Cost Routing
- Operator Groups
- Outgoing Number Substitution
- PRI or integrated voice, data PRI
- Personal phone manager Web page
- Ring Groups (ring all, circular hunt group, UCD, executive)
- System Speed Dial
- T1 or integrated voice, data T1
- Trunk Groups
- Variable length extension numbers (three-digit, four-digit)
- Voice mail (12 hours, eight ports)
- Virtual Extensions (20)
- Voice mail accounts (80)
- 16 DSP resources
- 64ms echo cancellation for VoIP calls

IP Station Features

- Call Drop
- Call Forward (All, Busy, No Answer)
- Call Forward to Outside Line (cell phone)
- Call Hold
- Call Logs
- Call Park Retrieve
- Call Waiting
- Hands free intercom
- Do Not Disturb
- Headset jack
- Missed Call Indicator
- Music on Hold
- Overhead Paging
- Redial
- Speakerphone
- Caller ID Name/Number
- Call Park
- Call Transfer
- Conferencing (3-person)
- Emergency call override
- Message Waiting Light
- Multiple Call Appearances
- Mute
- Personal Call Routing (Call Coverages)
- Volume Control

Router Features

- RIP V1, RIP V2, OSPF, BGP, and Static routes
- PPP, PPPoE, Frame Relay WAN protocols
- DHCP Client/Server
- Class-based Weighted Fair Queuing, Priority Queuing, Weighted Fair Queuing
- Diffserv aware/mark
- MLPPP/MLFR

Firewall Features

- Stateful Packet Inspection
- NAT (1:1), NATP (Many:1)
- Denial of Service (DoS) Protection
- Access Control Lists
- SIP aware (B2BUA)

VPN Features

- 50 tunnels
- IPSec
- DES/3DES/AES encryption

Ethernet Switch Features

- 10/100Base-T (24)
- 10/100/1000Base-T (2)
- Two SFP slots
- Auto-Rate
- Auto-Duplex
- Auto-MDI/MDI-X
- 802.1d Spanning Tree
- 802.1p Class of Service aware/mark
- 802.1Q VLANs
- 802.3af Power over Ethernet (15.4 watts for each of the 24 ports)

Management Features

- Command Line Interface (CLI)
- HTTP, HTTPS (Web browser)
- Telnet
- SSH

Environment

- **Operating Temperature:** 0 to 50 degrees C
- **Storage Temperature:** -20 to 70 degrees C
- **Relative Humidity:** Up to 95%, non-condensing

Physical

- **Chassis:** 1U, 19" rackmountable metal enclosure
- **Dimensions:** 1.7" H, 17.2" W, 12.8" D
- **Weight:** 11 pounds
- **AC Power:** 100-250 VAC, 50/60 Hz
- **Power:** 450 watts

Ordering Information

Equipment	Part #
NetVanta 7100	1200796L1
Network Interface Modules (NIMs)	
T1	1202862L1
Dual T1	1200872L1
ADSL	1200869L1
56/64K DDS	1200861L1
Voice Interface Modules (VIMs)	
Analog 4-Port Station (FXS)	1200690L1
Analog 4-Port Trunk (FXO)	1200691L1
Analog 2-Port Trunk/2-Port Station	1200692L1
T1/PRI	1200695L1