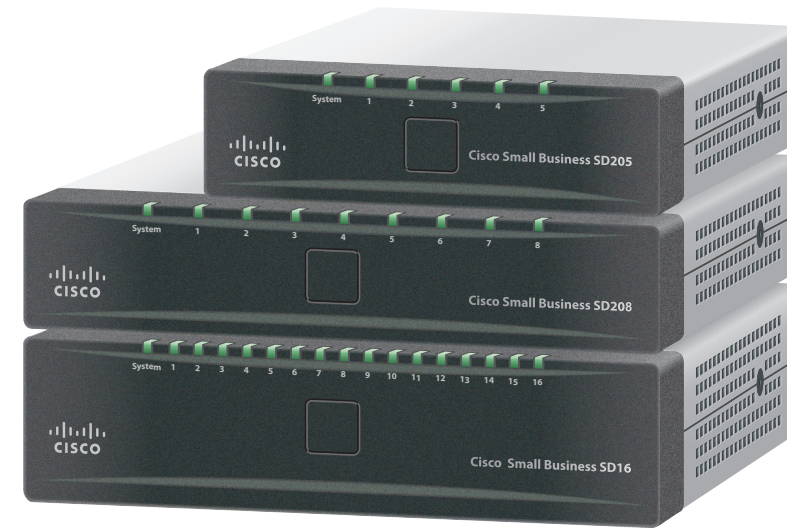




## Quick Start Guide



### Cisco Small Business Models SD205, SD208, and SD216 5-, 8-, and 16-Port 10/100 Switches

#### Package Contents

- Switch (SD205, SD208, or SD216)
- Power Adapter
- Quick Start Guide

## 1 Product Overview

Thank you for choosing this Cisco Small Business 10/100 switch. This switch provides non-blocking, wire-speed switching at a speed of 10 or 100 Mbps.

All ports support auto-negotiation to connect your devices at the same network speed, and auto MDI/MDI-X crossover detection.

Each port independently negotiates for best speed at either half- or full-duplex mode, for up to 200 Mbps of bandwidth per port. Fast store-and-forward switching prevents damaged packets from being passed into the network.

### Front Panel

The LEDs are located on the front panel of the switch.



**System LED**—(Green) This LED lights up and remains lit when the switch is powered on.

**LEDs 1-5, 1-8, or 1-16**—(Green) Each LED lights up when a connection is made through its corresponding port. The LED flashes when the corresponding port is active.

### Back Panel

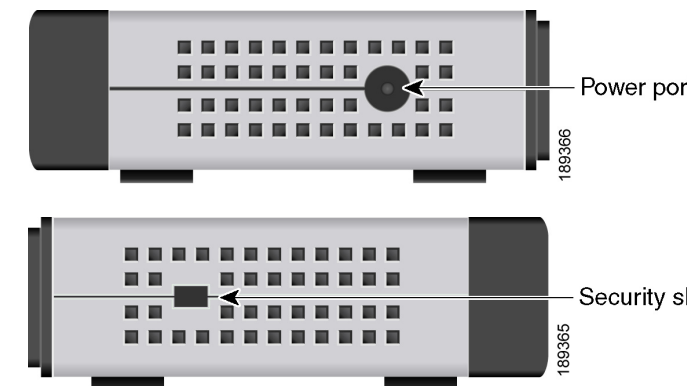
The Ethernet network ports are located on the back panel of the switch.



**Ports 1-5, 1-8, or 1-16**—These ports connect the switch to network devices such as computers.

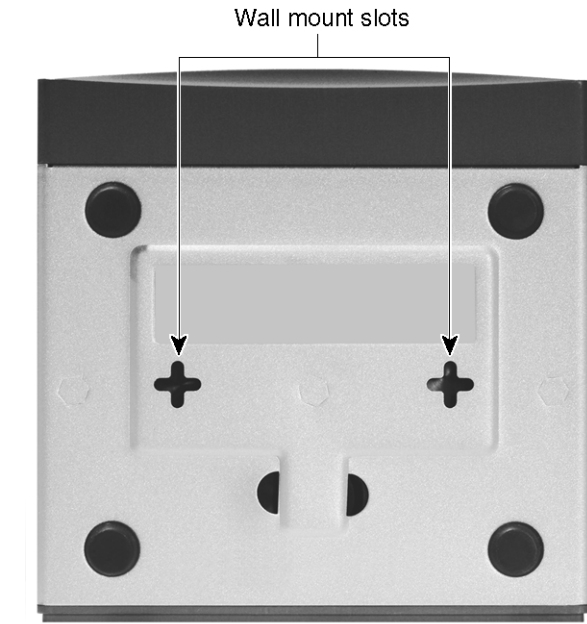
### Side Panels

The power port is where you connect the power adapter and is located on the side panel of the switch. The security slot is where you can attach a lock to protect the switch from theft and is located on the opposite side of the switch.



### Placement Options

To install the switch, either set it on its four rubber pads and place it on a flat surface, or mount it on a wall using the wall-mount slots on the bottom panel of the switch.



To use the wall-mount option, follow these steps:

**STEP 1** Attach two screws to the wall such that the wall-mount slots of the switch line up with the two screws:

SD205: The screws should be 1.7 in. (43 mm) apart.

SD208: The screws should be 2.5 in. (63.5 mm) apart.

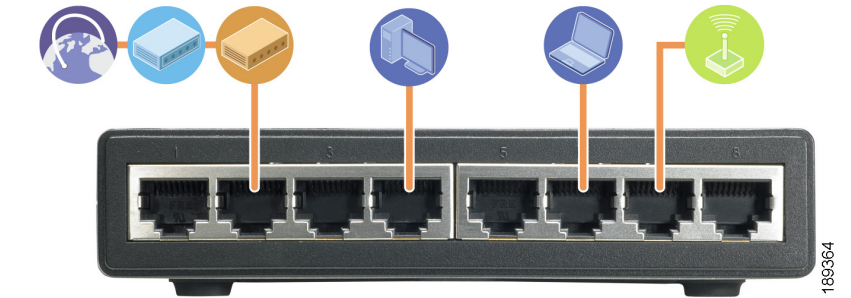
SD216: The screws should be 2.5 in. (63.5 mm) apart.

The wall-mount slots are two crisscross slots on the bottom panel of the switch.

**STEP 2** Maneuver the switch to insert the screws into the two wall-mount slots.

## 2 Typical Installation Scenario

The following application diagram is an example of a typical network configuration.



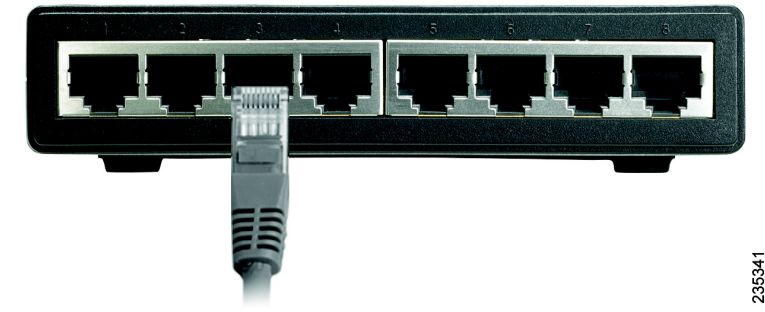
When you connect your network devices, make sure you do not exceed the maximum cabling distance of 328 feet (100 meters).

### 3 Connecting Devices to the Switch

Perform the steps in this section to connect devices to the switch.

**STEP 1** Power down all of the devices you want to connect to the switch.

**STEP 2** Connect one end of a Category 5 Ethernet network cable to one of the numbered ports on the switch. Connect the other end of the cable to a computer or other network device.



235341

**STEP 3** Repeat step 2 to connect additional devices.



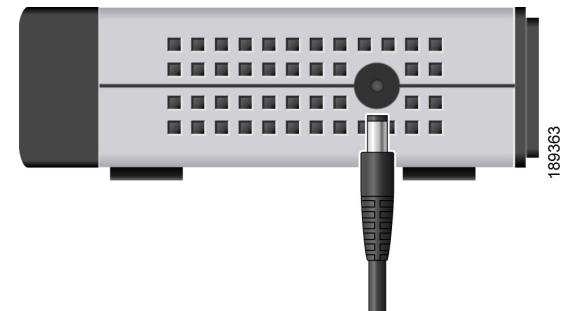
**Americas Headquarters**  
 Cisco Systems, Inc.  
 170 West Tasman Drive  
 San Jose, CA 95134-1706  
 USA  
<http://www.cisco.com>  
 Tel: 408 526-4000  
 800 553-NETS (6387)  
 Fax: 408 527-0883

Cisco, Cisco Systems, the Cisco logo, and the Cisco Systems logo are registered trademarks or trademarks of Cisco Systems, Inc. and/or its affiliates in the United States and certain other countries. All other trademarks mentioned in this document or Website are the property of their respective owners. The use of the word partner does not imply a partnership relationship between Cisco and any other company. (0705R)

© 2009 Cisco Systems, Inc. All rights reserved.

♻️ Printed in the USA on recycled paper containing 10% postconsumer waste.

**STEP 4** Connect the supplied power adapter to the power port on the side of the switch. Plug the other end of the adapter into an electrical outlet.



188363

**CAUTION** Make sure you use the power adapter included with the switch. Using a different power adapter may damage the switch.

**STEP 5** Power up the devices connected to the switch. The LED of each active port on the switch lights up.

Congratulations! The installation of the 10/100 switch is now complete.

### 4 Specifications

The following table lists the specifications for the SD205, SD208, and SD216 10/100 switches.

Item	Specification
Model	SD205, SD208, SD216
Standards	IEEE 802.3, IEEE 802.3u
Ports	<ul style="list-style-type: none"> <li>SD205: 5 RJ-45 10/100 Mbps ports</li> <li>SD208: 8 RJ-45 10/100 Mbps ports</li> <li>SD216: 16 RJ-45 10/100 Mbps ports</li> </ul>
Cabling Type	Cat5 Ethernet
LEDs	<ul style="list-style-type: none"> <li>SD205: System, Port Status 1—5</li> <li>SD208: System, Port Status 1—8</li> <li>SD216: System, Port Status 1—16</li> </ul>
Security Feature	Security Slot
Dimensions (WxHxD)	<ul style="list-style-type: none"> <li>SD205: 3.66 in. x 1.18 in. x 3.54 in. (93 mm x 30 mm x 90 mm)</li> <li>SD208: 5.12 in. x 1.12 in. x 5.11 in. (130 mm x 28.5 mm x 129.58 mm)</li> <li>SD216: 5.12 in. x 1.57 in. x 5.11 in. (130 mm x 38.5 mm x 129.58 mm)</li> </ul>
Unit Weight	<ul style="list-style-type: none"> <li>SD205: 8 oz. (0.23 kg)</li> <li>SD208: 15 oz. (0.43 kg)</li> <li>SD216: 19 oz. (0.54 kg)</li> </ul>
Power	<ul style="list-style-type: none"> <li>SD205/SD208: 100-240 VAC 50/60 Hz, 0.5 A</li> <li>SD216: 100-240 VAC 50/60 Hz, 1 A</li> </ul>
Certification	FCC Class B, CE
Operating Temperature	32 to 104°F (0 to 40°C)
Storage Temperature	-40 to 158°F (-40 to 70°C)
Operating Humidity	20 to 95%, noncondensing
Storage Humidity	5 to 90%, noncondensing

### 5 Where to Go From Here

Resource	Location
Technical Documentation	<a href="http://www.cisco.com/en/US/products/ps10007/tsd_products_support_series_home.html">www.cisco.com/en/US/products/ps10007/tsd_products_support_series_home.html</a>
Customer Support	<a href="http://www.cisco.com/en/US/support/tsd_cisco_small_business_support_center_contacts.html">www.cisco.com/en/US/support/tsd_cisco_small_business_support_center_contacts.html</a>
Warranty and End User License Agreement	<a href="http://www.cisco.com/go/warranty">www.cisco.com/go/warranty</a>
Open Source License Notices	<a href="http://www.cisco.com/go/osln">www.cisco.com/go/osln</a>
Regulatory Compliance and Safety Information	<a href="http://www.cisco.com/en/US/products/ps10007/prod_installation_guides_list.html">www.cisco.com/en/US/products/ps10007/prod_installation_guides_list.html</a>
Cisco Partner Central site for Small Business	<a href="http://www.cisco.com/web/partners/sell/smb">www.cisco.com/web/partners/sell/smb</a>