

GXV3662_HD / GXV3662_FHD

Vandal-Resistant & Weather-Proof HD IP Camera



GXV3662_HD / GXV3662_FHD

The **GXV3662** series is a powerful vandal-resistant and weather-proof dome IP camera of outstanding performance and quality. Its advanced ISP (Image Sensor Processor) powered with state-of-the-art auto-exposure/auto-white-balance algorithm and a high quality lens, ensures high-fidelity video quality that matches digital still camera color grade in a wide range of light environments. It features cutting edge H.264 real-time video compression with excellent image clarity, industry leading SIP/VoIP for 2-way audio and video streaming to mobile phones and video phones, integrated PoE, IR_CUT switch for color or black & white operation mode, and advanced security protection. The GXV3662 series can be managed with GSurf (Grandstream's intuitive FREE video management software that controls up to 36 cameras simultaneously) as well as other ONVIF compliant video management systems. It also offers an advanced and flexible HTTP API for easy integration with other monitoring systems. The GXV3662 series is a powerful network camera for professional surveillance application in outdoor environments.

Feature Highlights

- High quality 1.2 or 3.1 Megapixels CMOS sensor and lens
- Advanced multi-streaming-rate real-time H.264, Motion JPEG at 720p or 1080p resolutions
- Alarm input/output, audio input/output
- SD slot for local storage, 24MB pre-/post-event recording buffer
- Support Motion Detection and Notification on PC Client
- Support both variable bit rate and variable frame rate
- Built-in high performance streaming server to allow at least 4 simultaneous viewers
- Embedded video analytics and SIP/VoIP support
- Integrated Power-over-Ethernet (802.3af)
- Full Onvif conformance with extensions in the near future

Corporate Headquarters:
126 Brookline Avenue, 3rd Floor
Boston, MA 02215, USA

Regional Offices: Dallas, TX, USA | Los Angeles, CA, USA | Casablanca, Morocco | Valencia, Venezuela | Hangzhou, China | Shenzhen, China

Grandstream Networks, Inc.

www.grandstream.com

info@grandstream.com

GXV3662_HD / GXV3662_FHD

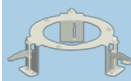
Technical Specifications

Video Compression	H.264, MJPEG
Image Sensor Resolution	GXV3662_HD: 1/3", 1.2 Megapixel CMOS, 1280H x 960V GXV3662_FHD: 1/3", 3.1 Megapixel CMOS, 2048H x 1536V
Lens Type Operation	1/3", 3.3~12mm, F1.6~F3.2, DC-Iris; Manual focus: 50cm ~ ∞; H: 89.8°~23.9°; V: 63.6°~17.9°
Mode Minimum	Light Sensor, mechanical IR Cut filter, color / black & white mode
Illumination	0.05Lux
Responsivity	GXV3662_HD: 5.48V/lux-sec (550nm) GXV3662_FHD: 1.9V/lux-sec (550nm)
Supported Maximum Video Resolution and Frame Rate	GXV3662_HD: 1280x960 (30fps) GXV3662_FHD: 2048x1536 (15fps); 1920x1080 (30fps)
Video Bit Rate	32 Kbps ~ 8 Mbps, multi-rate for preview & recording
Audio Input & Output	Line-In, Line-Out
Alarm Input & Output	Input: Voltage In < 15V; Output: 125VAC/0.5A, 30VDC/2A, Normal Open
Audio Compression	G.711a/u, AAC
IRIS Control	DC-IRIS
Embedded Analytics	Motion detection (up to 16 target areas)
Pre-/post-alarm Buffer	24MB
Snapshots	Triggered upon events, send via email/FTP, and stored in SD card
Network Interface	10M/100M auto-sensing, RJ45
Network Protocol	TCP/UDP/IP, RTP/RTCP, RTSP, DHCP, DDNS, HTTP, HTTPS, SMTP, FTP, NTP
Power over Ethernet (PoE)	IEEE 802.3af class 0
Peripheral Ports	Internal SDHC 2.0 socket to allow local storage
SIP/VoIP Support	Yes
Dimensions (D x L)	153mm (D) x 115mm (H)
Weight	1.19kg
Temperature / Humidity	-30°C ~ +50°C (-22°F ~ +122°F) for DC and PoE, with heater & fan Humidity 10~90% RH (non-condensing)
Power Adapter	Output: 12VDC/1A; Input: 100~240VAC, 50~60Hz
Casing	Vandal resistant, weather-proof with IP66, attachable to mounting kit of 1.875" diameter
Compliance	FCC, CE, C-Tick, IP66

Accessories:



Flush Mounting Kit (GXV_FM)



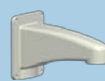
Mount



Cover Plate



Wall Bracket Mounting Kit (GXV_WM)



Wall Mount Bracket



Camera Top Attachment



Ceiling Pendant Mounting Kit (GXV_PM)



Ceiling Mounting Attachment



Connecting Shaft



Camera Top Attachment