

## For Software Developers

# Supporting Application Development

KX-UT670 APIs provide an environment for developing applications that enhance business productivity and service with the Panasonic KX-UT670 Smart Desk Phone. They let you develop applications that meet customer needs, and operate them on the Smart Desk Phone.

## Usage Examples

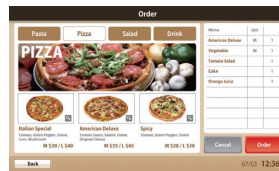
Applications can be developed for use by a variety of businesses.



**Hotel Phone**

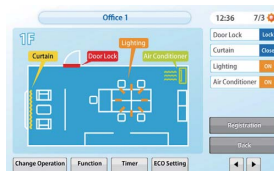
The screen can be used to search for information about the area around the hotel.

**Food Delivery Services**



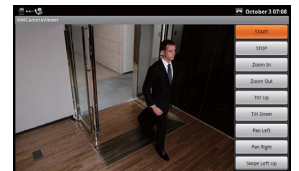
Orders can be placed directly from the on-screen menu.

**Office Facility Control**



The screen can be used to open or close curtains, and to turn the air conditioner on or off.

**Monitoring**

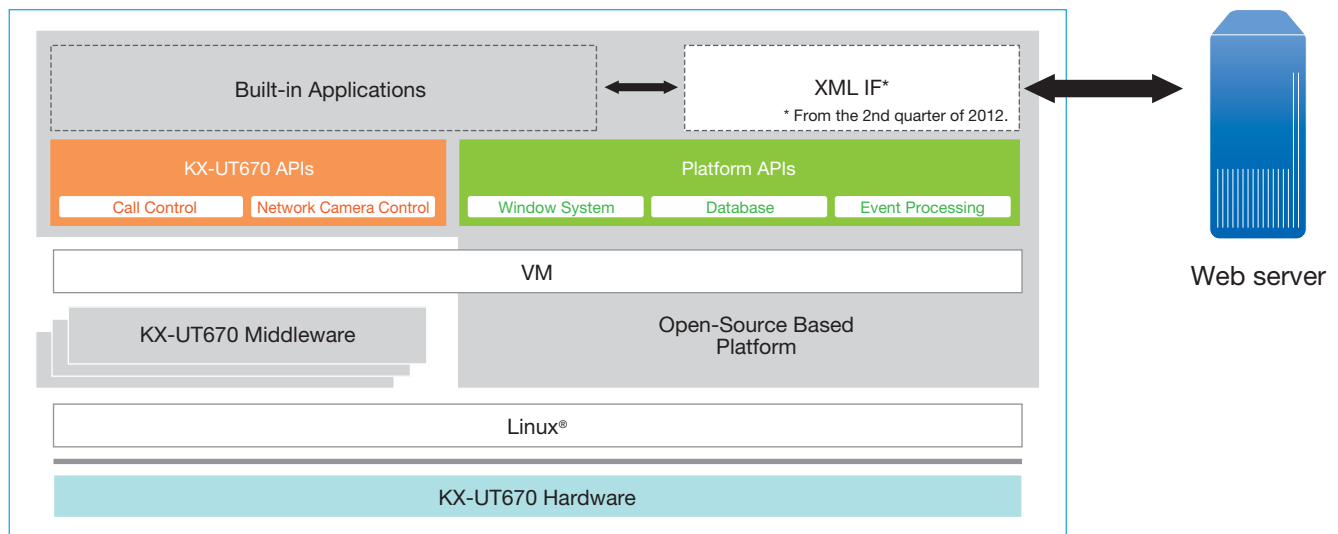


The network camera image can be viewed on-screen, and operating buttons can be changed as necessary.

● The images shown here are simulated application screens.

## Software Architecture for the KX-UT670

The KX-UT670 is based on open-source software. KX-UT670 applications are developed in the same manner as those for other devices.

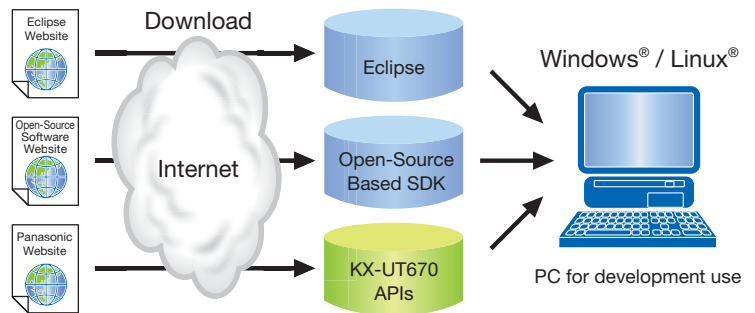


● Applications developed by using these APIs are exclusively for use with the Panasonic KX-UT670 Smart Desk Phone. They will not operate on devices other than the KX-UT670.

## 1. Development Environment

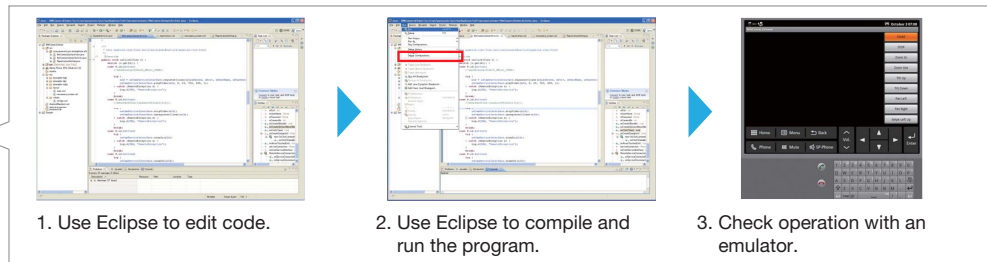
Download Eclipse (an integrated development environment containing an editor, compiler and debugger) to your Windows® or Linux® PC, then download open-source based SDK for Android development use. Next, add-on the KX-UT670 APIs. The Android development environment can be used for developing applications.

● Applications developed by using KX-UT670 APIs are exclusively for use with the KX-UT670. Do not distribute them for use on other devices.



## 2. Edit Code, Compile, and Confirm Operation

Programs are developed using Java™ programming language. Code editing and compiling are done with Eclipse (other editors and compilers can also be used). After compiling, an emulator can be used to do basic debugging on a PC.



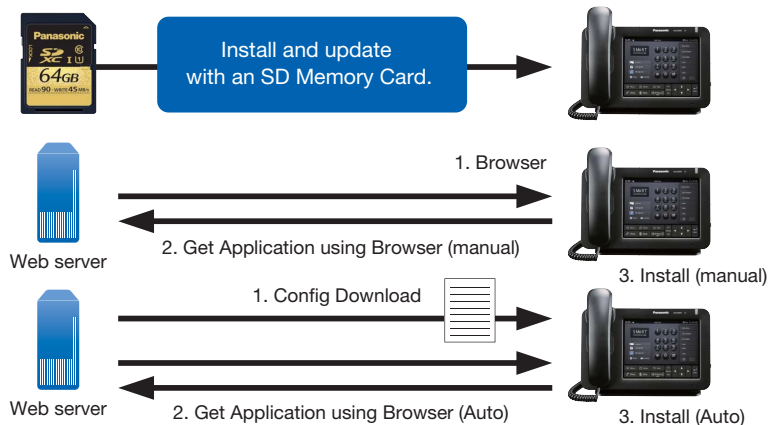
## 3. Install onto the KX-UT670 and Confirm Operation

Use an SD Memory Card to install the finished application onto the KX-UT670.

Use a web browser to get the application.  
• An SD Memory Card must be inserted into the KX-UT670.

Use the config file and access the designated URL to get the application. This enables automatic installation.

• From the 2nd quarter of 2012.  
• An SD Memory Card must be inserted into the KX-UT670.



## API Information

The following API types are available.

### ■ Telephone Operation API\*

Invokes KX-UT670 telephone functions (call, answer, ring, hold, forward, etc.) from the application.

### ■ Audio Control API\*

Controls the speakerphone, headset, 3-way conversation function, etc., provided in the KX-UT670 Smart Desk Phone.

\* Scheduled to be available in February 2012.

### ■ OAM (Operations, Administration and Management) API

Controls user log deletion, device reset, etc.

### ■ IP Network Camera Control API

Controls an IP network camera.

\*Supports Panasonic network cameras (complying with the PS interface).

### ■ Device Control API

Controls screen brightness, LED ON/blink, etc.

### Trademarks and registered trademarks

- Android is a trademark of Google Inc.
- Oracle and Java are registered trademarks of Oracle and/or its affiliates. Other names may be trademarks of their respective owners.
- Linux is the registered trademark of Linus Torvalds in the U.S. and other countries.
- Microsoft and Windows are either registered trademarks or trademarks of Microsoft Corporation in the United States and/or other countries.

DISTRIBUTED BY :

# Panasonic