

# Xorcom XR2000 4 BRI 16 FXS IP PBX (XR2031)



Product Name: Xorcom XR2000 4 BRI 16 FXS IP PBX (XR2031)

Manufacturer: Xorcom

Model Number: XR2031

Availability: In Stock

The Xorcom XR2000 4 BRI 16 FXS XR2031 is a stand-alone, pre-configured, out-of-the-box Asterisk IP PBX.

The XR2000 is a trixbox CE&reg; / Elastix&trade; Asterisk IP PBX system supporting various combinations of telephony ports. The device may be equipped with up to 32 analog FXS/FXO ports, up to 8 BRI ports, and 1 E1/T1 PRI or E1 R2 port. XR2000 Asterisk-based PBX System for SMB

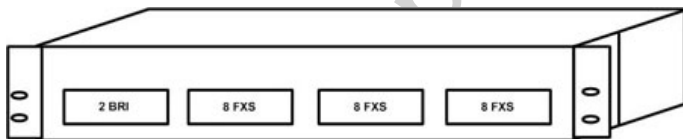
The XR2000 supports up to 160 PSTN / Analog phones ports with external Astribank units, up to 300 users and up to 60 concurrent calls.



Also available with the XR2000 is the Xorcom Rapid Recovery&trade; backup utility, provided on Disk-on-Key. This useful device features the Xorcom Live Rescue&trade; utility for disaster recovery. Another method for guaranteeing PBX uptime is the RAID1 dual-hard disk option. XR2000 units with an FXS module support Xorcom Rapid PA to provide public address functionality to Asterisk installations, and are also offered with I/O ports to support a wide array of peripheral devices.

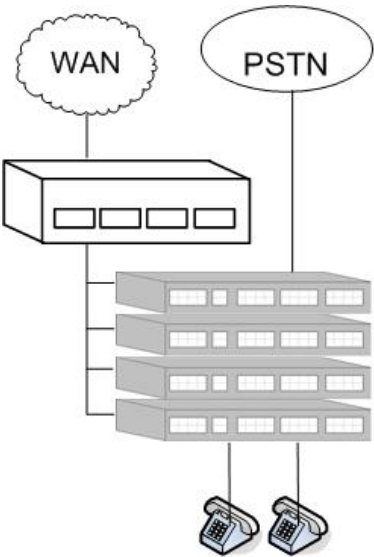
Mechanical Design

The XR2000 comes in a professional industry standard 19&rdquo; 2U rack-mountable chassis.



Multiple Astribank units may be connected to a single XR2000 server using different USB 2.0 ports, a USB 2.0 hub or USB 2.0 PCI card.

Architecture



# Xorcom XR2000 4 BRI 16 FXS IP PBX (XR2031)

## Applications

- Complete, stand alone IP-PBX for medium-sized businesses and enterprises (SMB and SME)
- Complete telephony system for hotels and condominiums - [read more](#)
- CLEC (Competitive Local Exchange Carriers) IP-PBX - [read more](#)

## Features

- Various combinations of FXS, FXO, BRI and PRI/R2 ports
- Supports SIP and IAX2 phones and trunks
- From 8 to 32 analog lines/extensions integrated into the unit
- Single ISDN PRI (E1/T1) or E1 R2 port
- Up to 4 external Astribank USB channel banks
- Up to 60 concurrent calls
- Supports auxiliary appliances (door locks, alarm systems). Available for models that feature I/O ports.
- FreePBX®: - Easy-to-use Web interface for Asterisk and network setup
- Advanced support and maintenance features: - Rapid Tunneling®; - opens a secured direct SSH tunneling to our support engineers upon user's request. Get our direct support wherever you are, behind firewalls and NATs. - Internet updates - Configuration export / import

## Hardware

- RAM: 1 GB
- Hard disk: from 250 GB 2.5"
- USB: 2 external USB 2.0

## Software

- trixbox CE 2.6.x
- Elastix 1.x

## Supported Extras

- Echo Cancellation Module: P/N XR0124 - Hardware Echo Cancellation Module for Xorcom XR XE, 2000 3000
- Rapid Recovery: P/N XR0068 - Backup utility provided on Disk-on-Key (includes Live Rescue)
- Live Rescue: Utility for creating bootable USB Disk-on-Key for disaster recovery)
- Rapid PA: P/N XR0067 - Public Address capability for FXS port(s)
- Rapid Tunneling: Rapid Tunneling - Premium Support Tool - Please note that Rapid Tunelling is pre-installed on all XR1000, XR2000, and XR3000 units
- Input / Output (I/O) Ports: Please note that I/O ports are available upon request

**Price: £1,378.20**

---