

Xorcom XR3000 1 PRI/R2 24 FXS IP PBX (XR3050)



Product Name: Xorcom XR3000 1 PRI/R2 24 FXS IP PBX (XR3050)

Manufacturer: Xorcom

Model Number: XR3050

Availability: In Stock

The Xorcom XR3000 1 PRI/R2 24 FXS XR3050 is a stand-alone, pre-configured, out-of-the-box Asterisk IP PBX

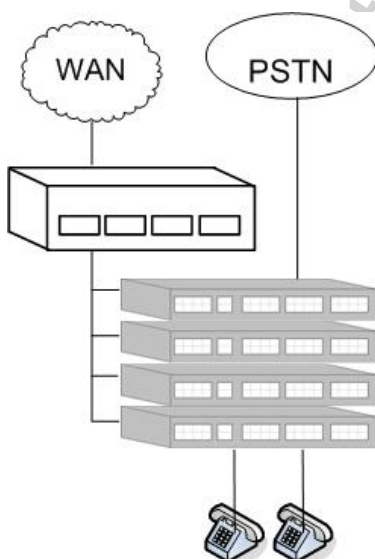
The XR3000 is a trixbox CE® / Elastix™ Asterisk IP PBX system supporting various combinations of telephony ports. The device may be equipped with up to 32 analog ports, and up to 4 E1/T1 PRI or E1 R2 ports.

The XR3000 supports up to 640 PSTN / Analog phones ports with external Astribank units, up to 1000 users and up to 300 concurrent calls.

Also available with the XR3000 is the Xorcom Rapid Recovery™ backup utility, provided on Disk-on-Key. This useful device features the Xorcom Live Rescue™ utility for disaster recovery. Another method for guaranteeing PBX uptime is the RAID1 dual-hard disk option. XR3000 units with an FXS module support Xorcom Rapid PA to provide public address functionality to Asterisk installations, and are also offered with I/O ports to support a wide array of peripheral devices. Mechanics: XR3000 Rack Mount



Multiple Astribank units may be connected to a single XR3000 server using different USB 2.0 ports, a USB 2.0 hub or USB 2.0 PCI card. Architecture



System architecture illustrating XR3000 connected to WAN and additional Astribank units via USB.

Applications

- Complete, heavy duty stand alone IP-PBX for large businesses

Xorcom XR3000 1 PRI/R2 24 FXS IP PBX (XR3050)

- Complete telephony system for hotels and condominiums - [read more](#)
- CLEC (Competitive Local Exchange Carriers) IP-PBX - [read more](#)

Features

- Various combinations of FXS, FXO and PRI or R2 ports
- Supports SIP and IAX2 phones and trunks
- From 8 to 32 analog lines/extensions integrated into the unit
- Up to 4 PRI (E1/T1) or R2 (E1) ports
- Up to 20 external Astribank USB channel banks
- Up to 300 concurrent calls
- Supports auxiliary appliances (door locks, alarm systems). Available for models that feature I/O ports.
- FreePBX®; - Easy-to-use Web interface for Asterisk and network setup
- Advanced support and maintenance features: - Rapid Tunneling®; - opens a secured direct SSH tunneling to our support engineers upon user's request. Get our direct support wherever you are, behind firewalls and NATs. - Internet updates - Configuration export / import

Hardware

- Processor: Intel Core 2 Duo E8400 (Quad-core - optional P/N XR0116)
- RAM: 1 GB (4 GB - optional P/N XR0117)
- Hard disk: from 250 GB 2.5"
- USB: 4 external USB 2.0

Software

- trixbox CE 2.6.x
- Elastix 1.x

Supported Extras

- Echo Cancellation Module: P/N XR0124 - Hardware Echo Cancellation Module for Xorcom XR XE, 2000 3000
- Rapid Recovery: P/N XR0068 - Backup utility provided on Disk-on-Key
- Live Rescue: Utility for creating bootable USB Disk-on-Key for disaster recovery
- Rapid PA: P/N XR0067 - Public Address capability for FXS port(s)
- Rapid Tunneling: Rapid Tunneling - Premium Support Tool - Please note that Rapid Tunelling is pre-installed on all XR1000, XR2000, and XR3000 units
- Input / Output (I/O) Ports: Please note that I/O ports are available upon request

Note that BRI ports can be added by connecting additional Astribank units.

Price: £2,020.30
